

# India GHG Program



**IL&FS Environmental Infrastructure & Services  
[IEISL]**

**8<sup>th</sup> January 2015**

# Swachh Bharat – Delhi Shows the Way!

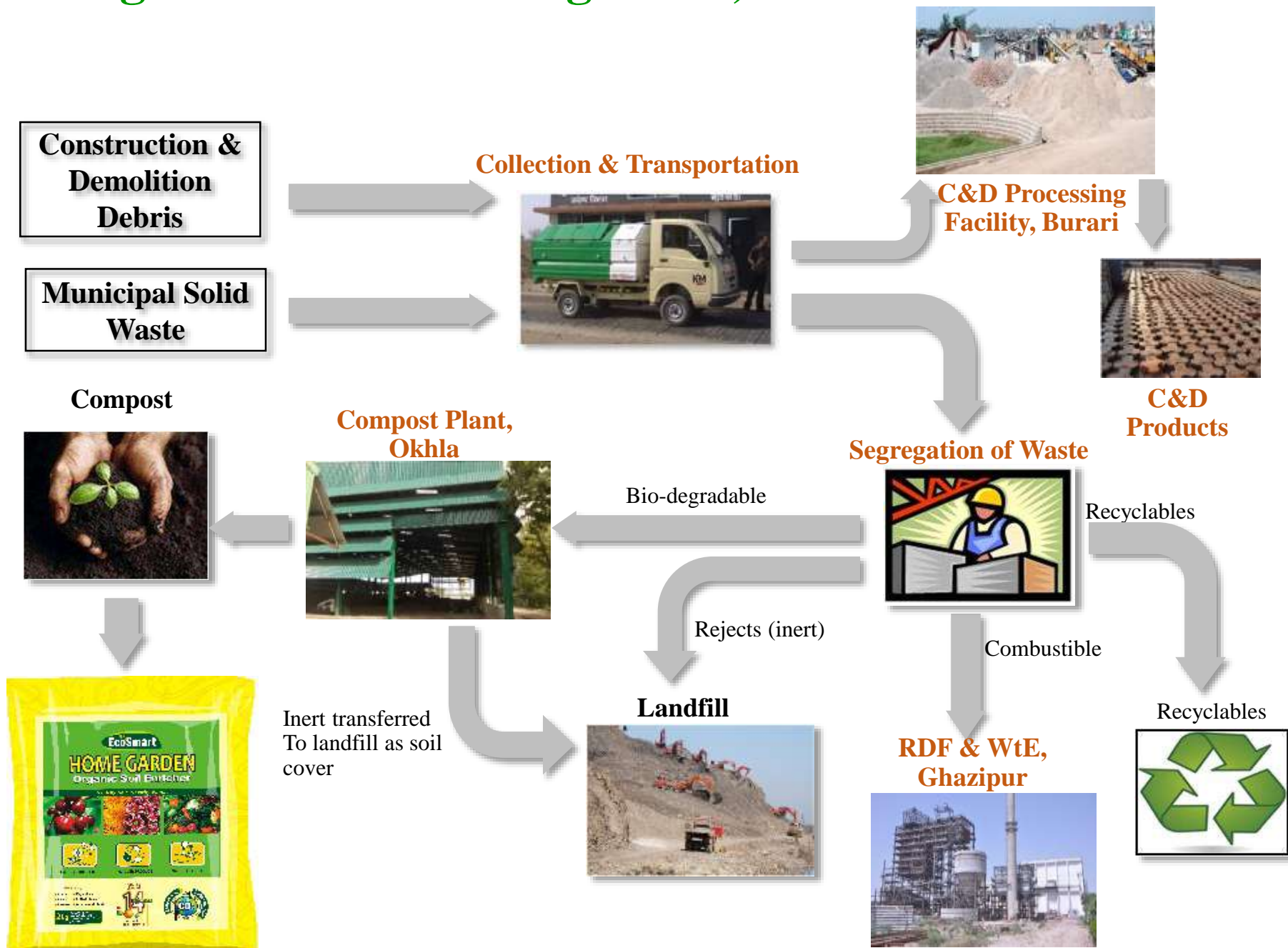
## IL&FS Integrated Solid Waste Management: Converting Waste to Wealth

IL&FS to process 5000 TPD\* of the total waste of around 10000 TPD,  
which is generated in the Nation's Capital:

- 2000 TPD – Waste to Energy (WtE): Commissioning March 2015  
[Ghazipur, East Delhi]
- 2000 TPD – Construction & Demolition Waste (C&D): Operational  
[Burari, North Delhi]
- 500 TPD – Composting facility: Operational  
[Okhla, South Delhi]

\* TPD : Tons Per Day

# Integrated Waste Management, Delhi : Value Chain





# Ghazipur Dumpsite: Site for Waste to Energy

- **Municipal Solid Waste (MSW) sent for dumping = more than 2000 TPD**
- **Dumpsite operational since 1984, over 5 mn tons of waste dumped**
- **Dumpsite spread to an area = 29 hectares**
- **Average Height of dumpsite = 25 metres**
- **Current estimates of population around site is approximately 100,000**



95% of Delhi's  
Flower Trade

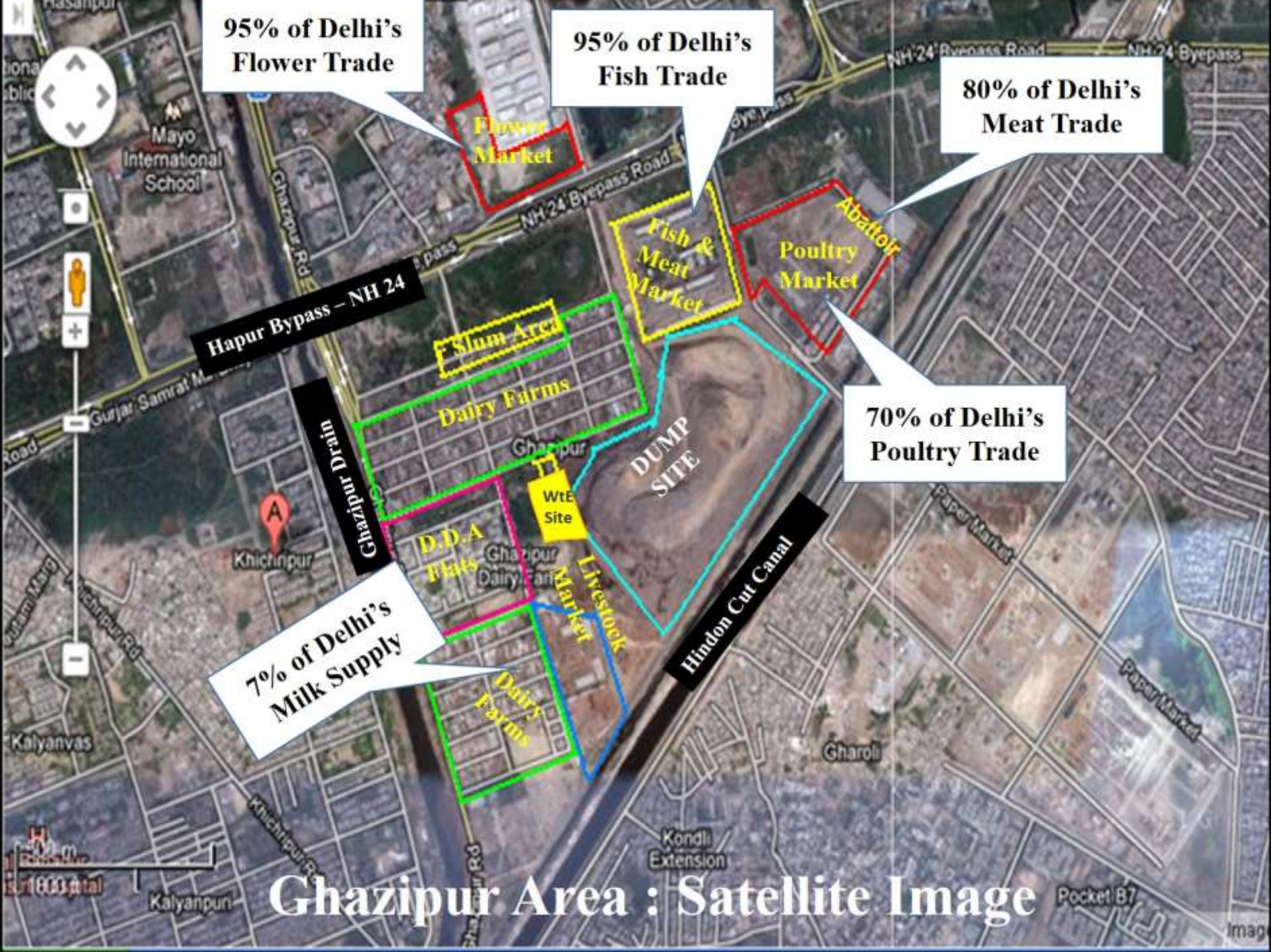
95% of Delhi's  
Fish Trade

80% of Delhi's  
Meat Trade

70% of Delhi's  
Poultry Trade

7% of Delhi's  
Milk Supply

# Ghaziipur Area : Satellite Image





# Ghazipur Waste to Energy - RDF Plant (Operational)



Grab operations



RDF Processing Operations



Loading after Shredders

# Ghazipur WtE Project Highlights

- India's largest waste processing facility, *processing 2000 TPD of waste*
- Will *produce 700 TPD of RDF* (Refuse Derived Fuel) and generate 12 MW of power
- State of the art *plant compliant with Euro Emission norms*
- *Highest standards of Pollution control measures* (Flue Gas Treatment, Leachate Treatment Plant, Odor, Dust and Noise control)
- Highest levels of *transparency* (Continuous Emission Monitoring systems & Visitors' gallery)
- The plant will mitigate 8.2 million tons of Green House Gas emissions over the next 25 years (life of the project) reducing global warming
- *RDF plant commissioned; Power plant target commissioning date is 31<sup>st</sup> March 2015*



# Social Interventions: Ghazipur WtE Plant

200 ragpicking families gainfully employed



**Gulmeher- Journey of rag-pickers to artisans!**





**Thank you.**